



ABOUT EOS

Equal Opportunity Schools creates equitable learning environments and ensures that students from diverse ethnic and socio-economic backgrounds have the opportunity to enroll and succeed in your most rigorous high school courses.

OUR APPROACH

We design the Action For Equity (A4E) framework to support schools and districts with the coaching, data analytics, and student identification tools necessary to eliminate the opportunity gap. The four phases of A4E build upon one another. Our approach is consultative and collaborative, which yields specific and measurable results.

OUR PARTNERSHIP

Districts are assigned a Partnership Director (PD) to facilitate the A4E model. Through regular visits, presentations and coaching, our partnership increases enrollment in advanced academic pathways, amplifies a student's **sense of belonging**, enhances a student's experiences, identifies and **removes systemic barriers**, and **transforms adult mindsets**.

+ OUR IMPACT

EOS has partnered with more than 700 schools in 220 districts across 30 states to identify and enroll 50,000 low-income and students of color.

IN 2018-2019:

- 86% of clients gave EOS a client satisfaction score of 8 out of 10 or higher.
- 417,000 students and 26,000 staff members took the EOS survey.
- Partner schools had on average a 27% increase in the number of AP® passing grades among historically underrepresented low-income and students of color during the 2019-2020 school year.

THE ACTION FOR EQUITY™ (A4E) multi-phase model is designed to help you build equity and sustainability at the highest levels of your academic course offerings. A4E is your road map to ensuring that your students and particularly low-income and students of color, have access to and success in your most academically intense high school programs.

PHASE 1

AO Access Opportunity

Introduces the core A4E toolbox, analytics, coaching, and student identification tools. Successful schools see a 30% increase in the number of low-income and students of color taking and passing AP/IB/AICE courses.

PHASE 2

ES Experience Success

Districts and schools have access to all AO tools, as well as a new suite of tools and data, to increase cues and experiences of belonging. With these tools, districts track and assess test scores and grades, which improves your understanding of student and staff support needs. This phase includes four (4) half-day trainings on essential equity topics.

PHASE 3

EE Extend Equity

Anchored by the Equity Leader Labs, or full day professional learning experiences to deepen understanding of the complex forces of implicit bias, race and student experience. These labs propel action toward sustainability as schools and districts continue to access AO and ES tools.

PHASE 4

SE Sustain Equity

Assumes fidelity to phases 1-3 and builds on these experiences to foster sustainability and self-direction. Using the AO and ES toolbox, schools and districts receive remote support, as they lead their own way through the A4E process.



“ Our partnership with EOS not only is resulting in thousands of underrepresented students taking on the challenge of AP® or IB, but we are working together to ensure that our academic culture nurtures access and opportunity, high expectations, and a sense of belonging for all students.” - Jack R. Smith, Ph.D., Former Superintendent of Schools, Montgomery County Public Schools

REGIONAL REFERENCES

Contact information available upon request.

Samantha Del Valle

Assistant Director of Office for Leading and Learning, Pasco County School District (FL)

Scott Murphy

Director of Secondary Curriculum and Districtwide Programs, Montgomery County Public Schools (MD)

Jason Austin

Principal, Sterling High School (IL)

Michael Conner

Superintendent, Middletown Public Schools (CT)

Brian Schultz

Chief Operations Officer, Charlotte Mecklenburg Schools (NC)

Andy Meloche

Principal, Berkely School District

Kristin Ingold

Supervisor for AP, AVID, and Gifted Office for Leading and Learning, Pasco County School District (FL)

Julie McCain

AP Teacher, Lamar Consolidated Independent School District

REGIONAL DISTRICTS

West Coast

Campbell Union High School District
Elk Grove Unified
Irvine Unified School District
San Juan Unified
San Rafael City High
West Contra Costa Unified School District
Western Placer

South West

Arlington Independent School District
Austin Independent School District
Crowley Independent School District
Lamar Consolidated Independent School District
Spring Independent School District
Texarkana Independent School District

South East

Bentonville School District
Cabarrus County Schools
Charlotte-Mecklenburg Schools
Escambia County
Guilford County Schools
Jonesboro Public Schools
Lee County
Orange County Schools
Pasco County School District

Midwest

Berkley School District
Chicago Public Schools
Elmhurst School District 205
Farmington Public Schools
Glenbard Township High School District 87
Indian Prairie School District 204
School District of South Milwaukee
Springfield School District 186
Westerville City Schools

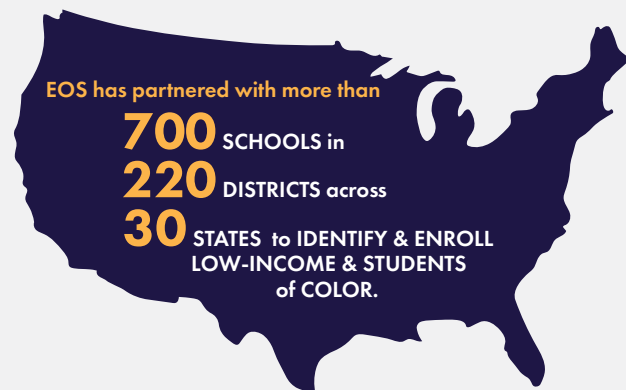
North East

Arlington Central School District
Bloomfield School District
Buffalo City School District
Greenburgh Central School District
Madison Metropolitan School District
Middletown Public Schools
Montgomery County Public Schools
New York City Department of Education
South Orange-Maplewood School District

*For a full list of district partners visit our website: www.eoschools.org

“ This is important to do on a statewide level... The Governor signed off on this initiative almost 2.5 years ago and we’re working in partnership with their office.”

- Dr. Karen B. Salmon, State Superintendent of Schools, State of Maryland



5601 Sixth Avenue South, Suite 258 Seattle, WA 98108

www.EOSchools.org | info@EOSchools.org | 206.547.1167



Copyright © 2021 Equal Opportunity Schools - All rights reserved. Photos are for illustrative purposes only.

EQUAL
 OPPORTUNITY
 SCHOOLS